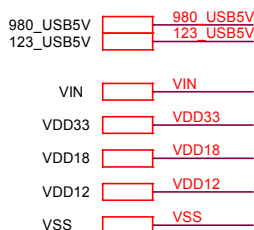
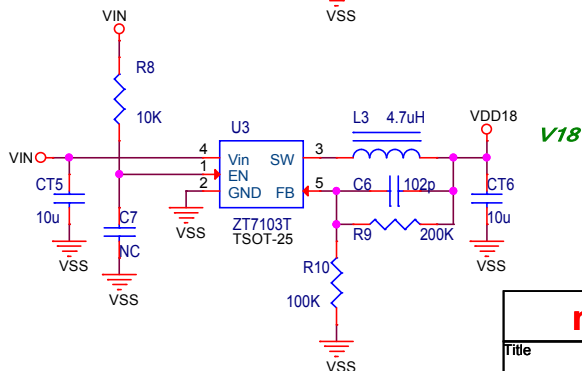
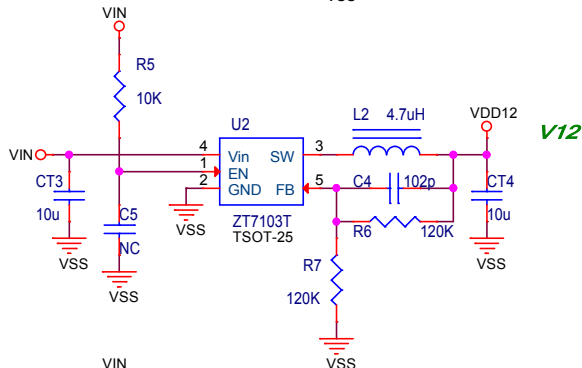
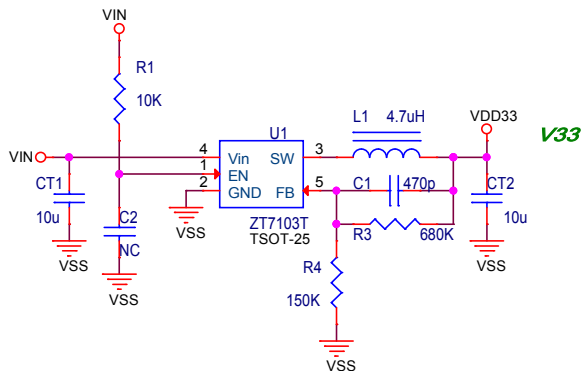
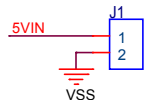
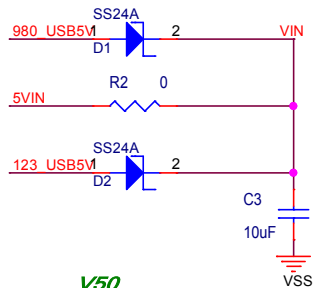


nuvoTon
NuDesign

nuvoTon Technology Corp.

Title		
NK-LGNUC980		
Size	Document Number	Rev
A	Block Diagram	1.0
Date:	Tuesday, May 12, 2020	Sheet 1 of 13



nuvoTon Technology Corp.

Title
NK-LGNUC980

Size A Document Number
Power

Rev
1.0

Date: Tuesday, May 12, 2020 Sheet 3 of 13

USB0_ID 1
 PA0 2
 PA1 3
 PA2 4
 PA3 5
 PA4 6
 PA5 7
 PA6 8
 VD33 9
 VD12 10
 VD18 11
 VD19 12
 VD12 13
 PA7 14
 PA8 15
 PA9 16
 PA10 17
 PA11 18
 PA12 19
 VD33 20
 PG9 21
 PG8 22
 PG7 23
 PG6 24
 PG5 25
 PG3 26
 PC1 27
 PG0 28
 PB0 29
 PB6 30
 PB4 31
 VSS_ADC 32
 VD33_ADC 33
 PB7 34
 PB5 35
 PB1 36
 PB3 37
 PB2 38
 VD33 39
 32K_IN 40
 32K_OUT 41
 PB8 42
 VD12 43
 PC0 44
 PC1 45
 PC2 46
 PC3 47
 PC4 48
 PC5 49
 PC6 50
 PC7 51
 PC8 52
 PC9 53
 PC10 54
 PC11 55
 PC12 56
 PC13 57
 PC14 58
 PC15 59
 VD33 60
 PD2 61
 PD3 62
 PD4 63
 VSS 64

NUC980DK61Y

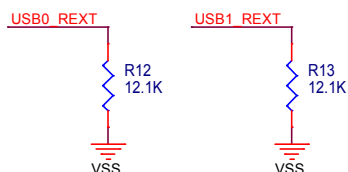
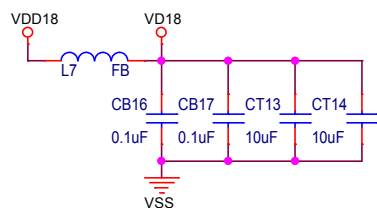
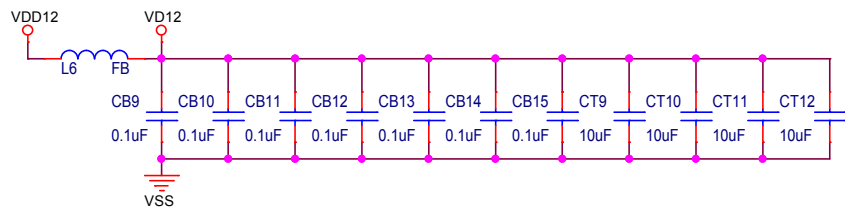
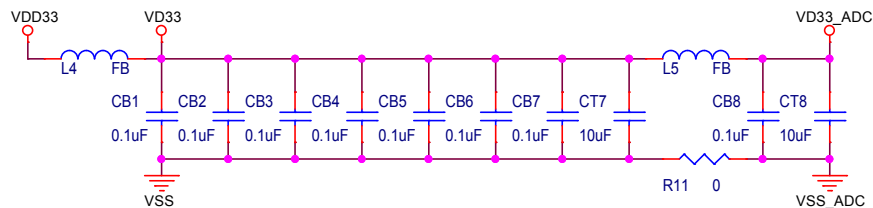
USB0_ID 1
 PA0 2
 PA1 3
 PA2 4
 PA3 5
 PA4 6
 PA5 7
 PA6 8
 VD33 9
 VD12 10
 VD18 11
 VD19 12
 VD12 13
 PA7 14
 PA8 15
 PA9 16
 PA10 17
 PA11 18
 PA12 19
 VD33 20
 PG9 21
 PG8 22
 PG7 23
 PG6 24
 PG5 25
 PG3 26
 PC1 27
 PG0 28
 PB0 29
 PB6 30
 PB4 31
 VSS_ADC 32
 VD33_ADC 33
 PB7 34
 PB5 35
 PB1 36
 PB3 37
 PB2 38
 VD33 39
 32K_IN 40
 32K_OUT 41
 PB8 42
 VD12 43
 PC0 44
 PC1 45
 PC2 46
 PC3 47
 PC4 48
 PC5 49
 PC6 50
 PC7 51
 PC8 52
 PC9 53
 PC10 54
 PC11 55
 PC12 56
 PC13 57
 PC14 58
 PC15 59
 VD33 60
 PD2 61
 PD3 62
 PD4 63
 VSS 64

VSS 128
 USB0_REXT 127
 VD33 126
 USB0_DP 125
 USB0_DM 124
 VD12 123
 USB1_REXT 122
 VD33 121
 USB1_DP 120
 USB1_DM 119
 VD12 118
 VDD 117
 PE11 116
 VBUSVLD 115
 PE9 114
 PE8 113
 PE7 112
 PE6 111
 PE5 110
 PE4 109
 PE3 108
 PE2 107
 PE1 106
 VSYNC 105
 HSYNC 104
 12M_OUT 103
 12M_IN 102
 XT_IN 101
 XT_OUT 100
 PF12 99
 PF11 98
 PF10 97
 VSS 96
 VD12 95
 VD12 94
 PB13 93
 PF6 92
 PF5 91
 PF4 90
 PF3 89
 PF2 88
 PF1 87
 PF0 86
 VD33 85
 VD18 84
 VD18 83
 VD12 82
 nRST 81
 PG15 79
 PG14 78
 PG13 77
 PG12 76
 PG11 75
 PD15 74
 PD14 73
 PD13 72
 PD12 71
 PD11 70
 PD10 69
 PD9 68
 PD8 67
 PD7 66
 PD6 65

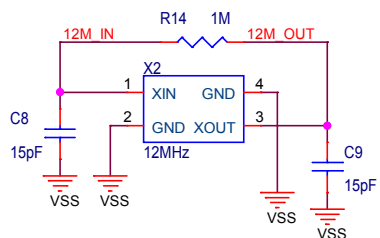
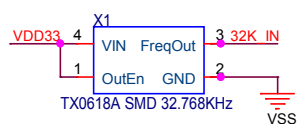
PA[12:0] PA[12:0]
 PB[8:0] PB[8:0]
 PB13 PB13
 PC[15:0] PC[15:0]
 PD[15:2] PD[15:2]
 PE[12:0] PE[12:0]
 PF[12:0] PF[12:0]
 PG[1:0] PG[1:0]
 PG3 PG3
 PG[9:5] PG[9:5]
 PG[15:11] PG[15:11]
 32K_IN 32K_IN
 32K_OUT 32K_OUT
 12M_IN 12M_IN
 12M_OUT 12M_OUT
 USB0_DM USB0_DM
 USB0_DP USB0_DP
 USB0_REXT USB0_REXT
 USB0_ID USB0_ID
 USB1_DM USB1_DM
 USB1_DP USB1_DP
 USB1_REXT USB1_REXT
 nRST nRST
 VD33_ADC VD33_ADC
 VD33 VD33
 VD18 VD18
 VD12 VD12
 VSS_ADC VSS_ADC
 VSS VSS

nuvoTon Technology Corp.

File		
NK-LGNUMC980		
Size	Document Number	Rev
Custom	NUC980DK	1.0
Date:	Tuesday, May 12, 2020	Sheet 4 of 13



32K_IN	32K_IN
12M_IN	12M_IN
12M_OUT	12M_OUT
USB0_REXT	USB0_REXT
USB1_REXT	USB1_REXT
VD33_ADC	VD33_ADC
VDD33	VDD33
VD33	VD33
VDD18	VDD18
VD18	VD18
VDD12	VDD12
VD12	VD12
VSS_ADC	VSS_ADC
VSS	VSS



nuvoTon Technology Corp.

Title		
NK-LGNUM980		
Size	Document Number	Rev
A	Power Filter	1.0
Date:	Tuesday, May 12, 2020	Sheet 5 of 13

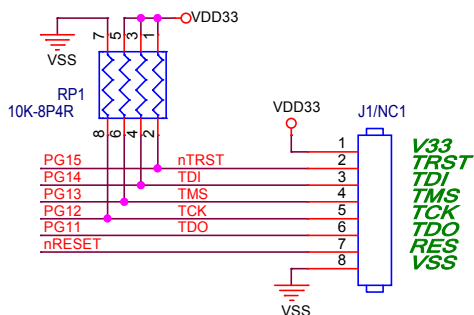
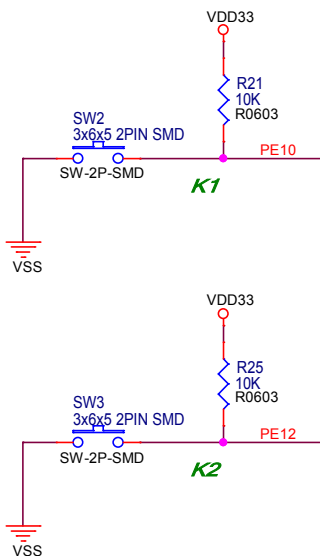
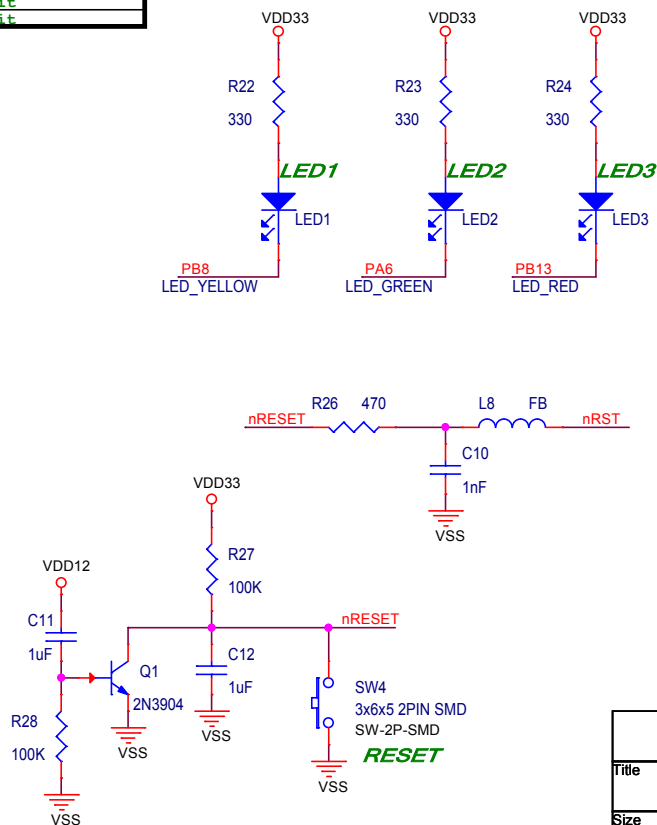
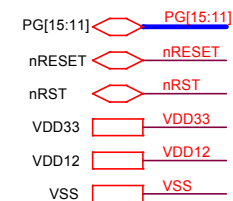
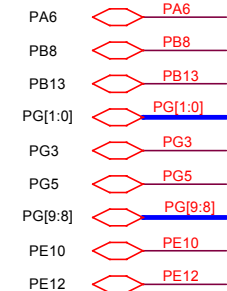
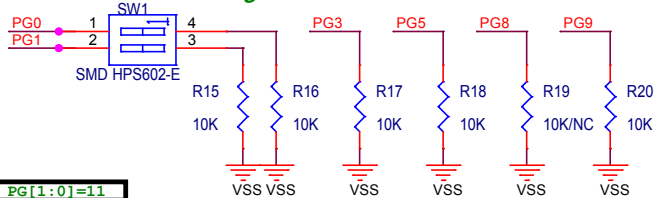
PG1	PG0	Booting from
ON(0)	ON(0)	USB
OFF(1)	OFF(1)	QSPI Flash 0

PG3	Watch Dog
ON(0)	OFF
OFF(1)	ON

PG5	UART0 Message
ON(0)	ON
OFF(1)	OFF

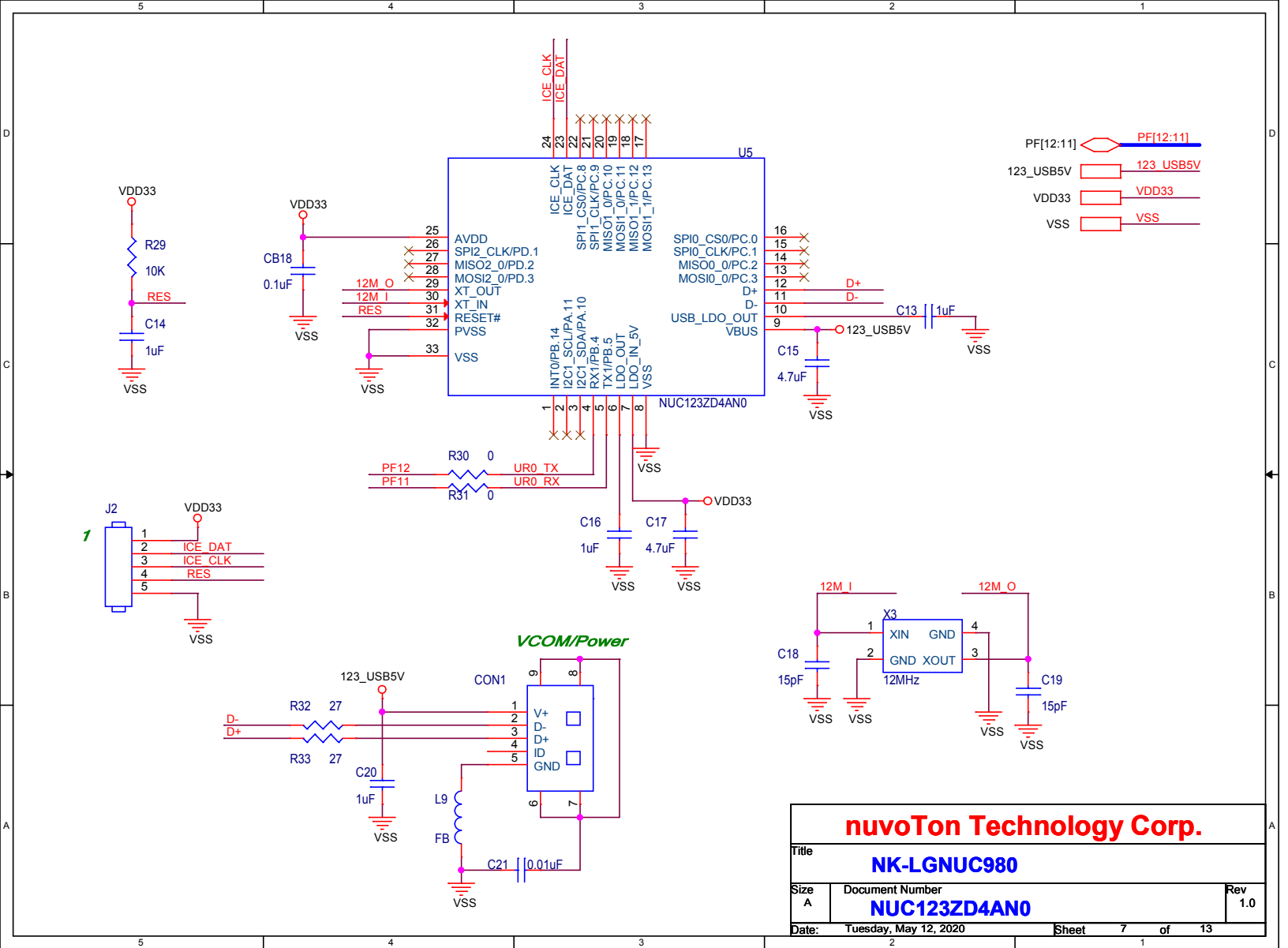
PG9	PG8	QSPI Source if PG[1:0]=11
ON(0)	ON(0)	SPI-NAND, 1-bit
ON(0)	OFF(1)	SPI-NAND, 4-bit
OFF(1)	ON(0)	SPI-NOR, 4-bit
OFF(1)	OFF(1)	SPI-NOR, 1-bit

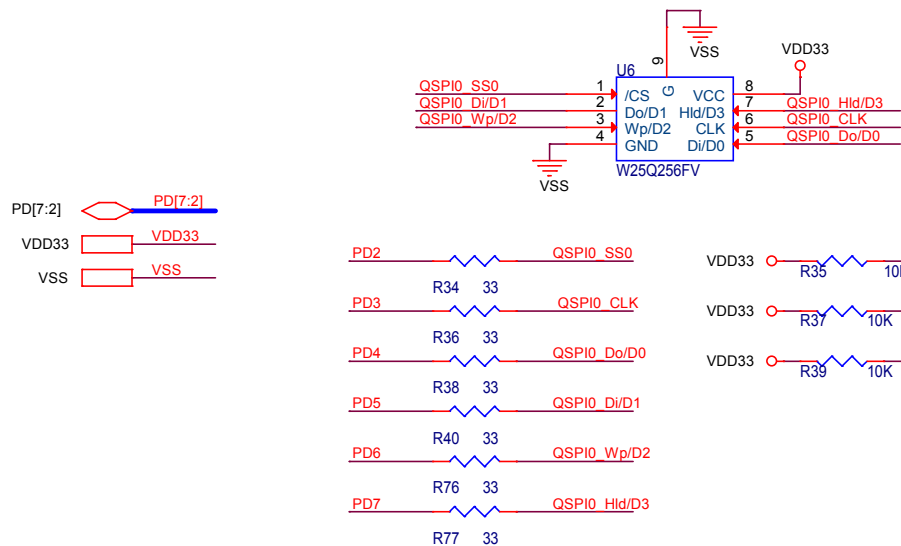
Power On Setting



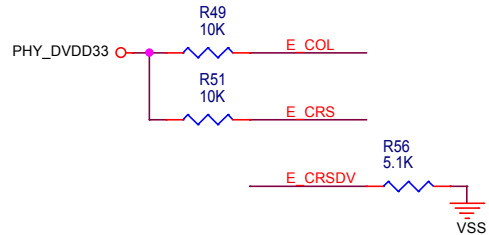
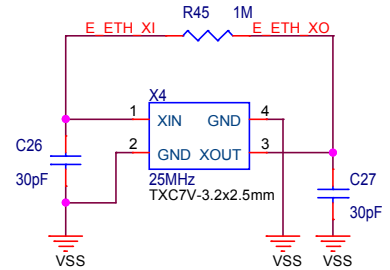
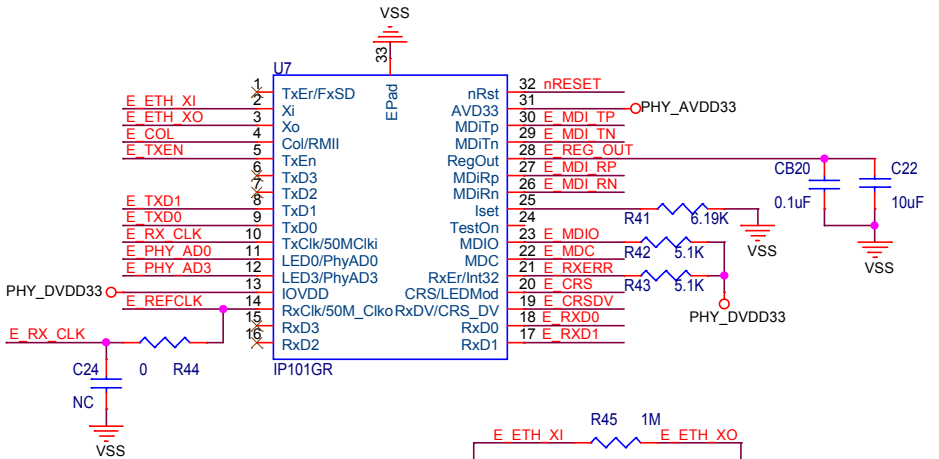
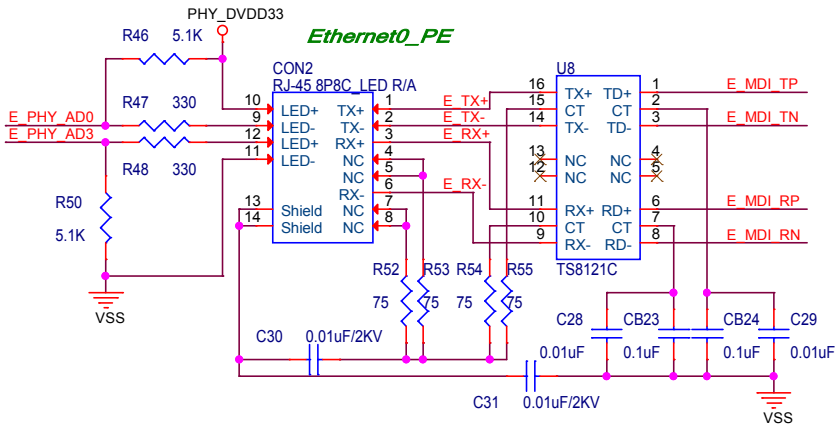
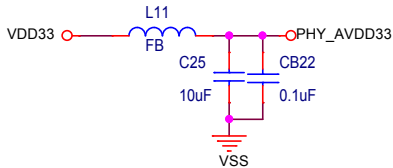
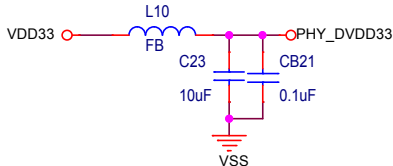
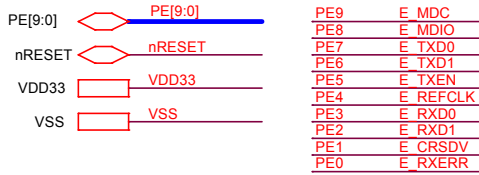
nuvoTon Technology Corp.

Title		
NK-LGNUMC980		
Size	Document Number	Rev
A	Configure	1.0
Date:	Tuesday, May 12, 2020	Sheet 6 of 13

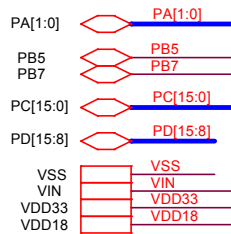




nuvoTon Technology Corp.		
Title		
NK-LGNUC980		
Size	Document Number	Rev
A	SPI Nand Flash	1.0
Date:	Tuesday, May 12, 2020	Sheet 8 of 13



nuvoTon Technology Corp.			
Title			
NK-LGNUM980			
Size	Document Number		Rev
A	RMII_PE		1.0
Date:	Tuesday, May 12, 2020	Sheet	9 of 13



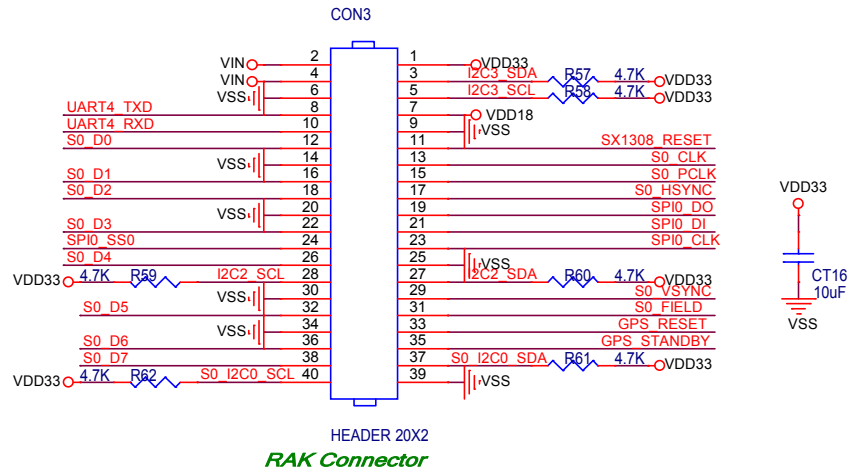
PA0 S0 I2C0_SDA
PA1 S0 I2C0_SCL

PC0 SX1308_RESET
PC1 GPS_RESET
PC2 GPS_STANDBY

PC3 S0_CLK
PC4 S0_PCLK
PC5 S0_HSYNC
PC6 S0_VSYNC
PC7 S0_FIELD
PC8 S0_D0
PC9 S0_D1
PC10 S0_D2
PC11 S0_D3
PC12 S0_D4
PC13 S0_D5
PC14 S0_D6
PC15 S0_D7

PB5 I2C2_SCL
PB7 I2C2_SDA

PD8 SPI0_SS0
PD9 SPI0_CLK
PD10 SPI0_DO
PD11 SPI0_DI
PD12 UART4_TXD
PD13 UART4_RXD
PD14 I2C3_SCL
PD15 I2C3_SDA

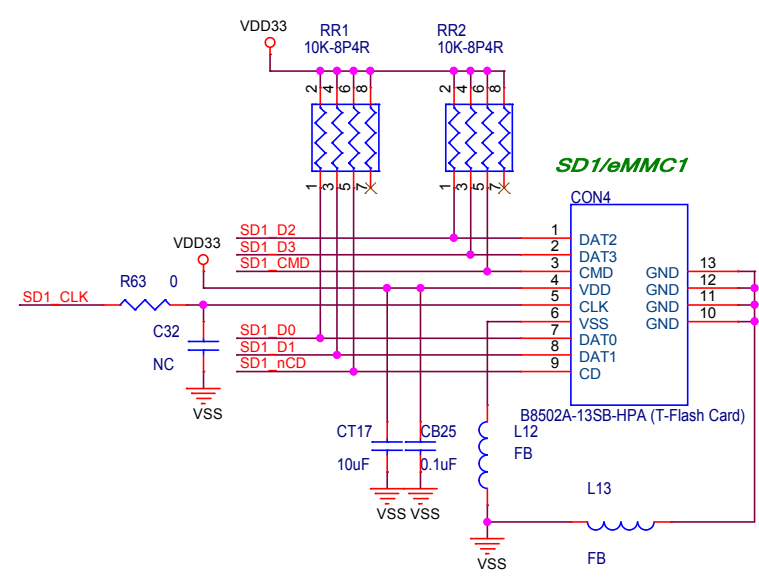


nuvoTon Technology Corp.

Title		
NK-LGNUM980		
Size	Document Number	Rev
A	RAK/CMOS_Connector	1.0
Date:	Tuesday, May 12, 2020	Sheet 10 of 13

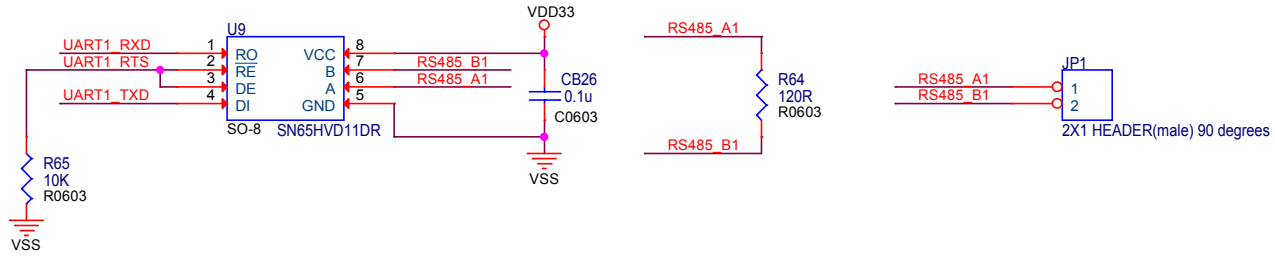


PF0	SD1_CMD
PF1	SD1_CLK
PF2	SD1_D0
PF3	SD1_D1
PF4	SD1_D2
PF5	SD1_D3
PF6	SD1_nCD

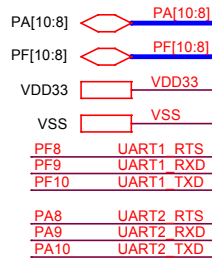
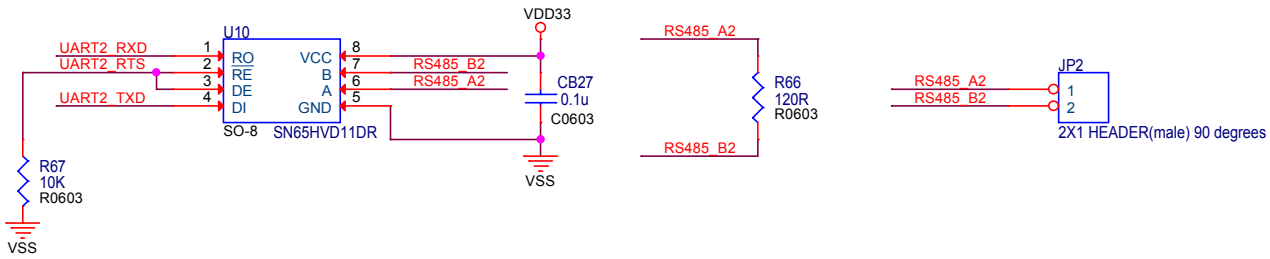


nuvoTon Technology Corp.		
Title		
NK-LGNUC980		
Size	Document Number	Rev
A	SD_Card	1.0
Date:	Tuesday, May 12, 2020	Sheet 11 of 13

RS485_1

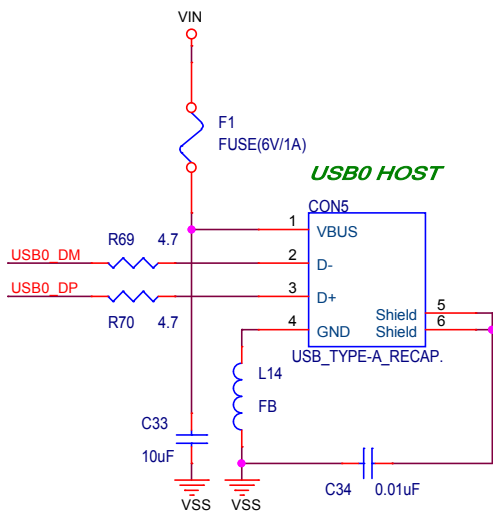


RS485_2

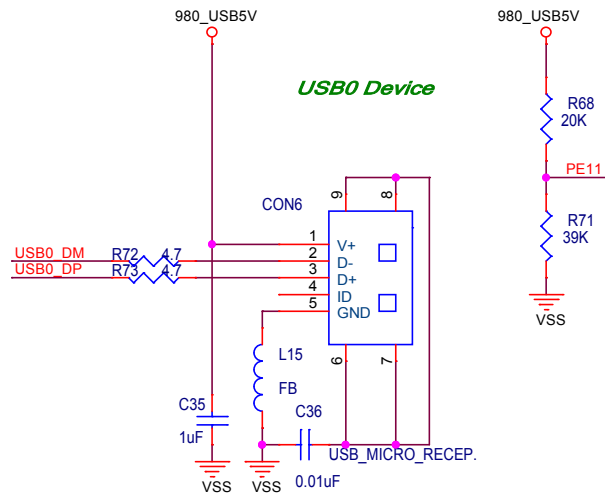
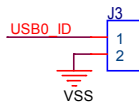


nuvoTon Technology Corp.

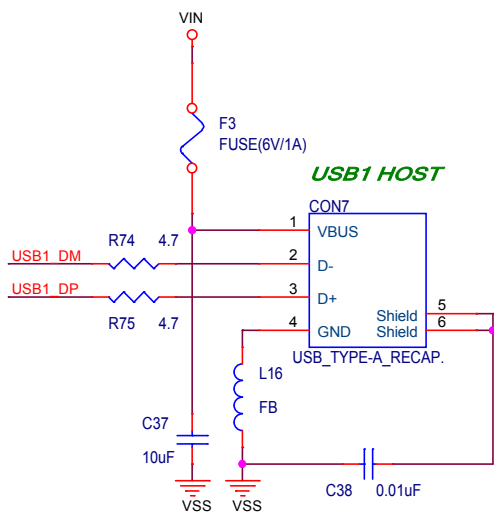
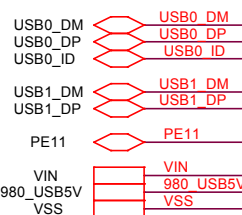
Title		NK-LGNUC980	
Size	Document Number	Rev	
A	RS485	1.0	
Date:	Tuesday, May 12, 2020	Sheet	12 of 13



USB0 HOST



USB0 Device



USB1 HOST

nuvoTon Technology Corp.

Title		
NK-LGNUC980		
Size A	Document Number	Rev 1.0
USB		
Date: Tuesday, May 12, 2020	Sheet 13 of 13	