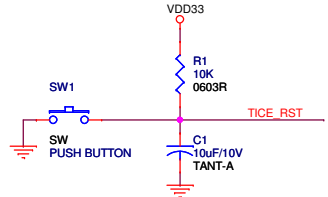
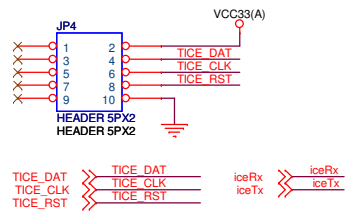


Reset Circuit

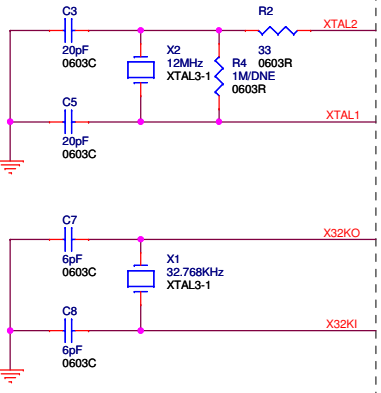


SWD Interface

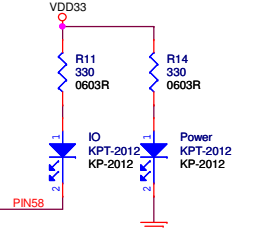
From ICE Bridge's USB Power



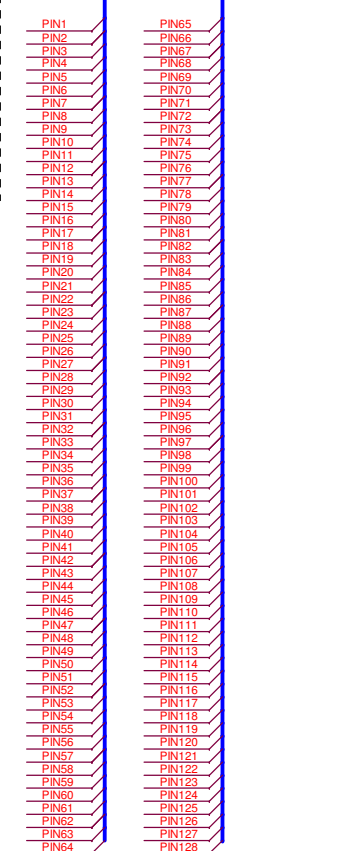
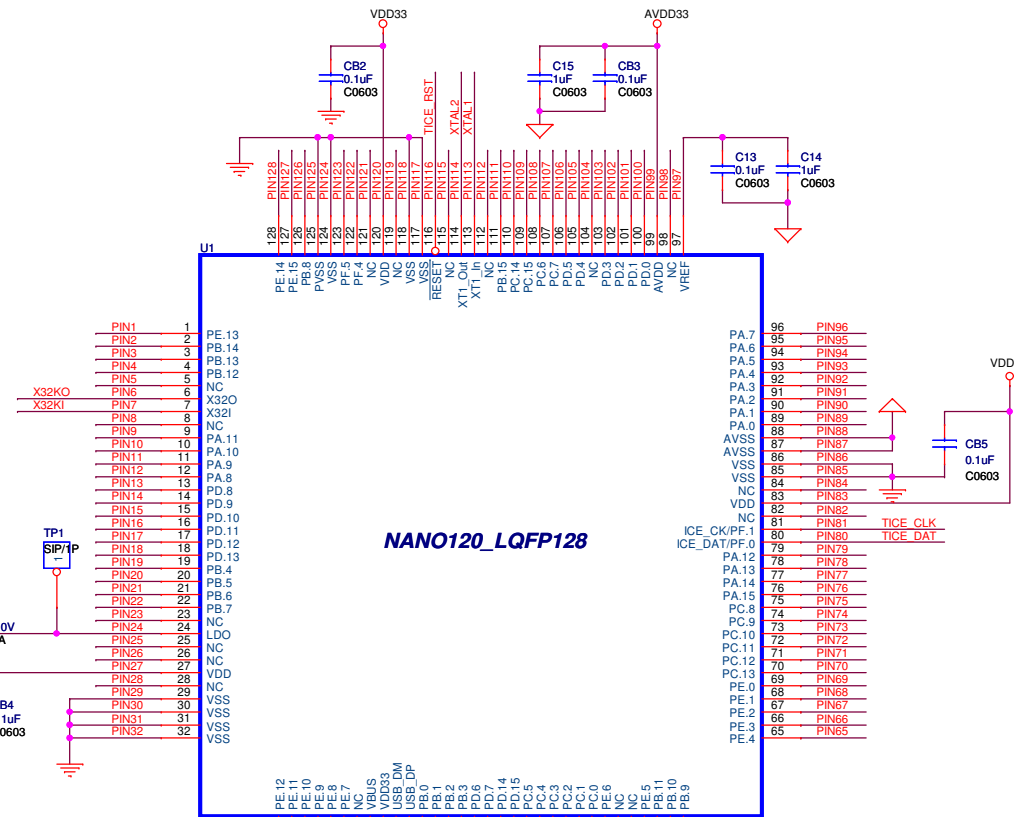
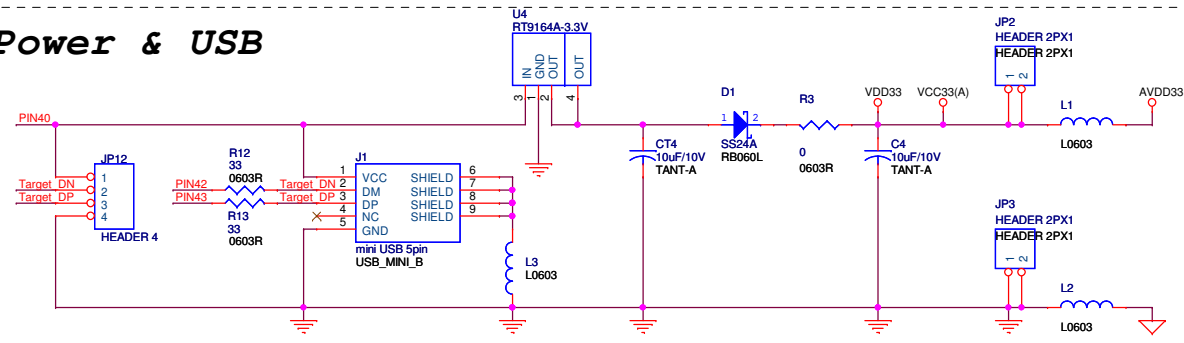
Crystal



LED



Power & USB



Title: **NuTiny-EVB-Nano120-LQFP128 V1.2**

Size: **Document Number**

Custom: **NANO120KE3BN.SCH**

Date: **Wednesday, January 02, 2013**

Sheet: **2** of **3**

Rev: **V1.2**

