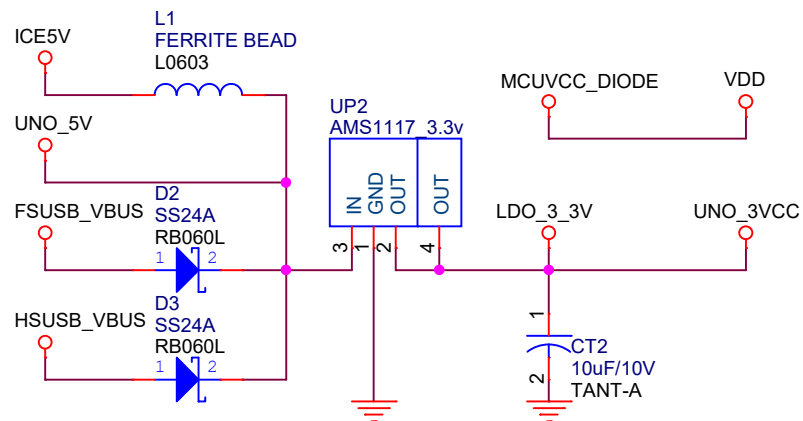
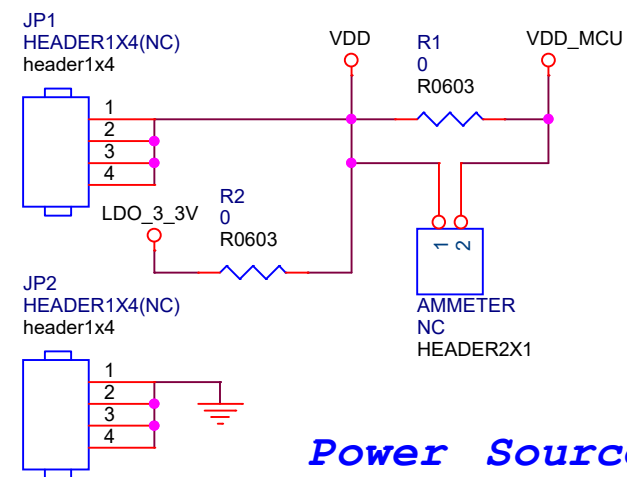


*Power Source
5V*



*Power Source
3.3V*



*Power Source
MCU*

nuvoTon

Title

NuMaker-M460

Size
A

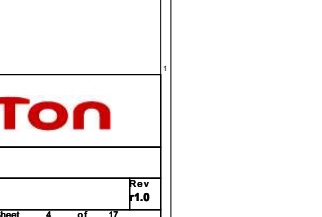
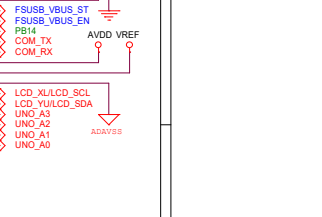
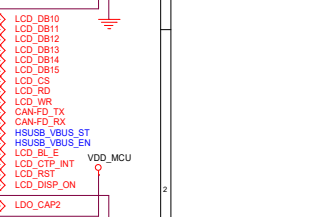
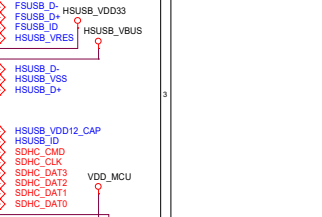
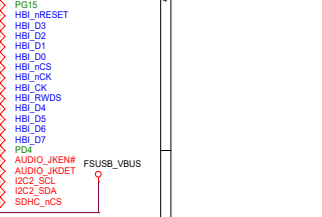
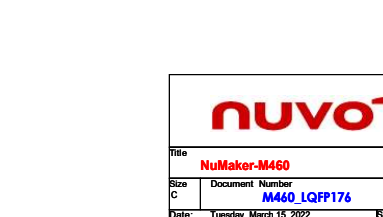
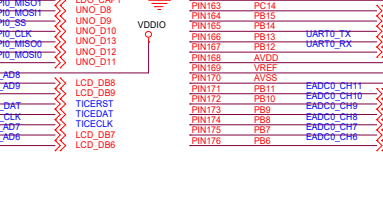
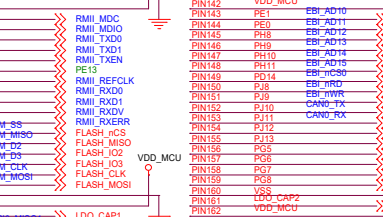
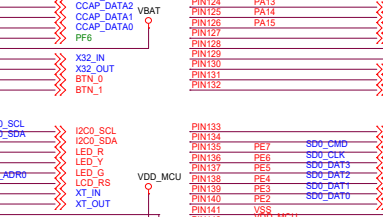
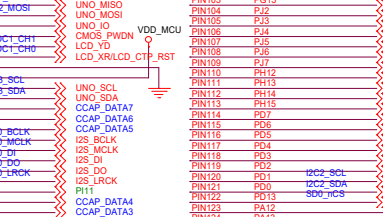
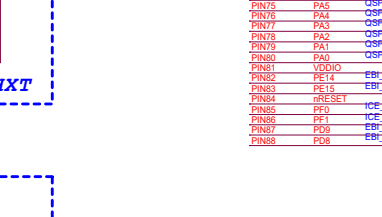
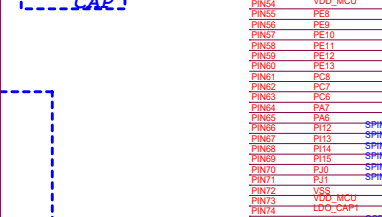
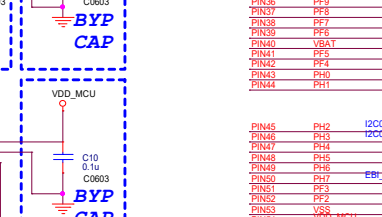
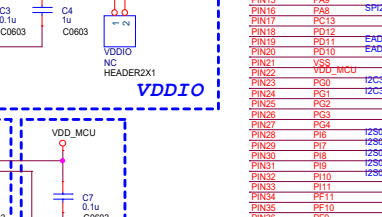
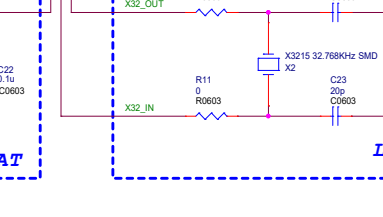
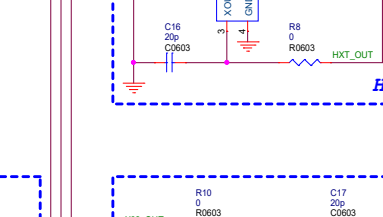
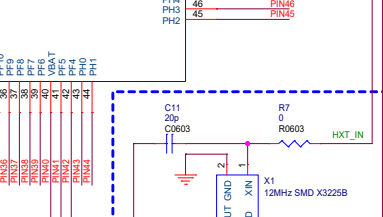
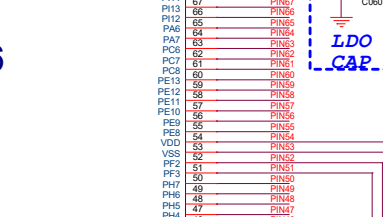
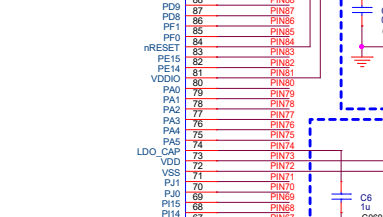
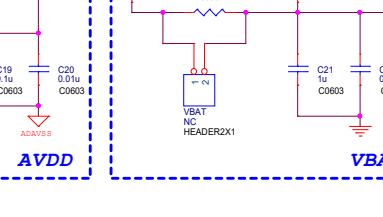
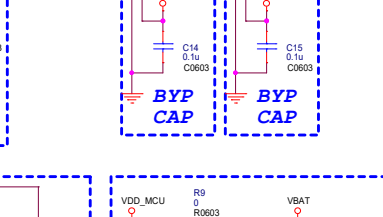
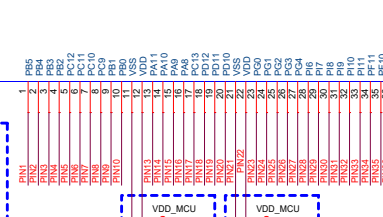
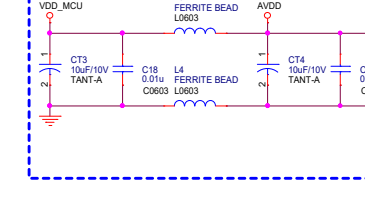
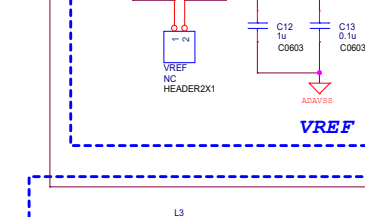
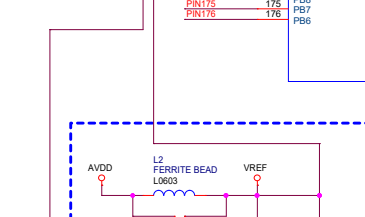
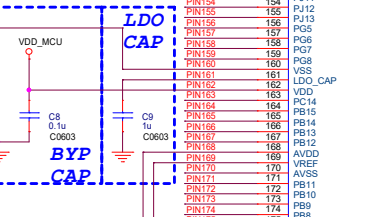
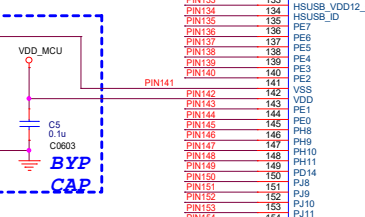
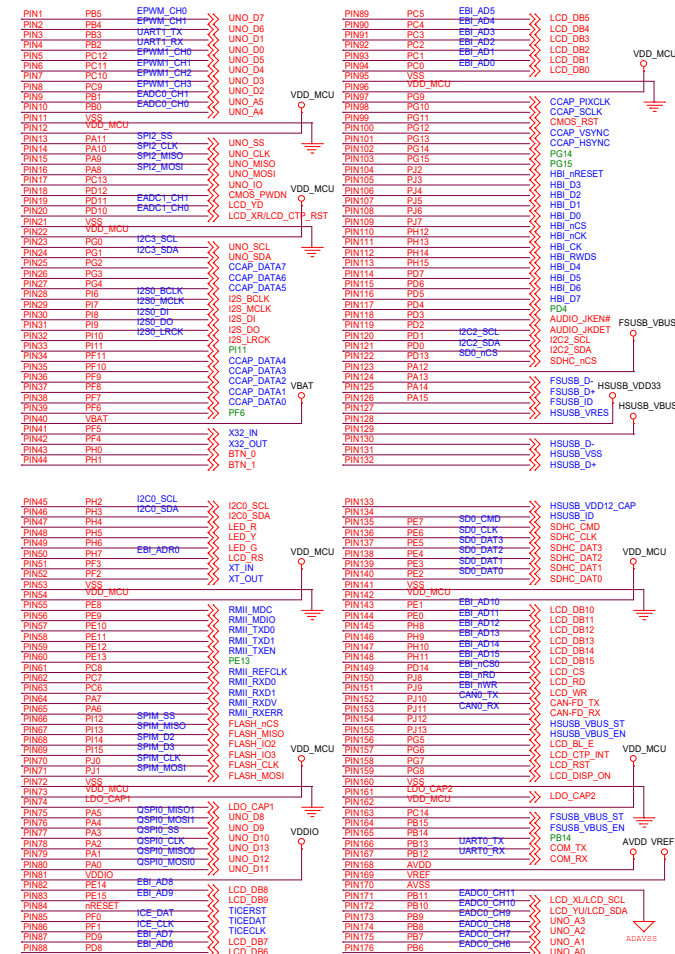
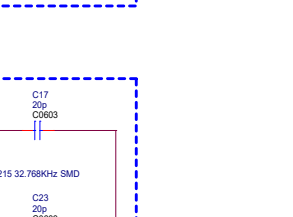
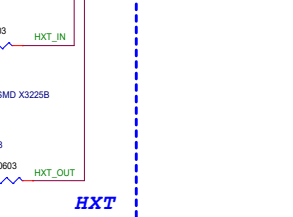
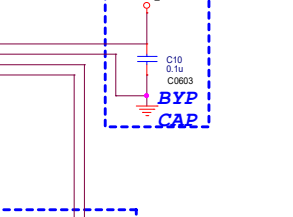
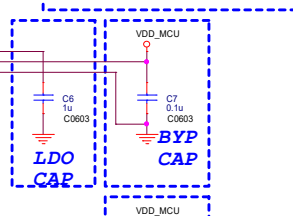
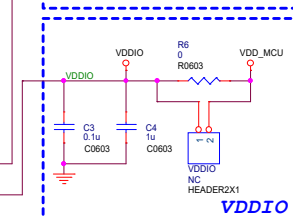
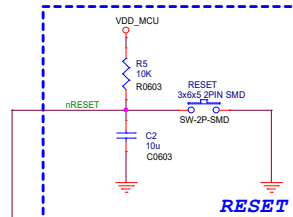
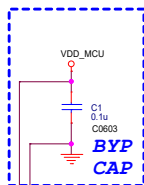
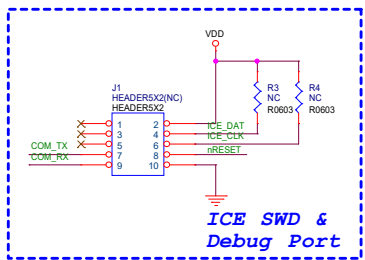
Document Number

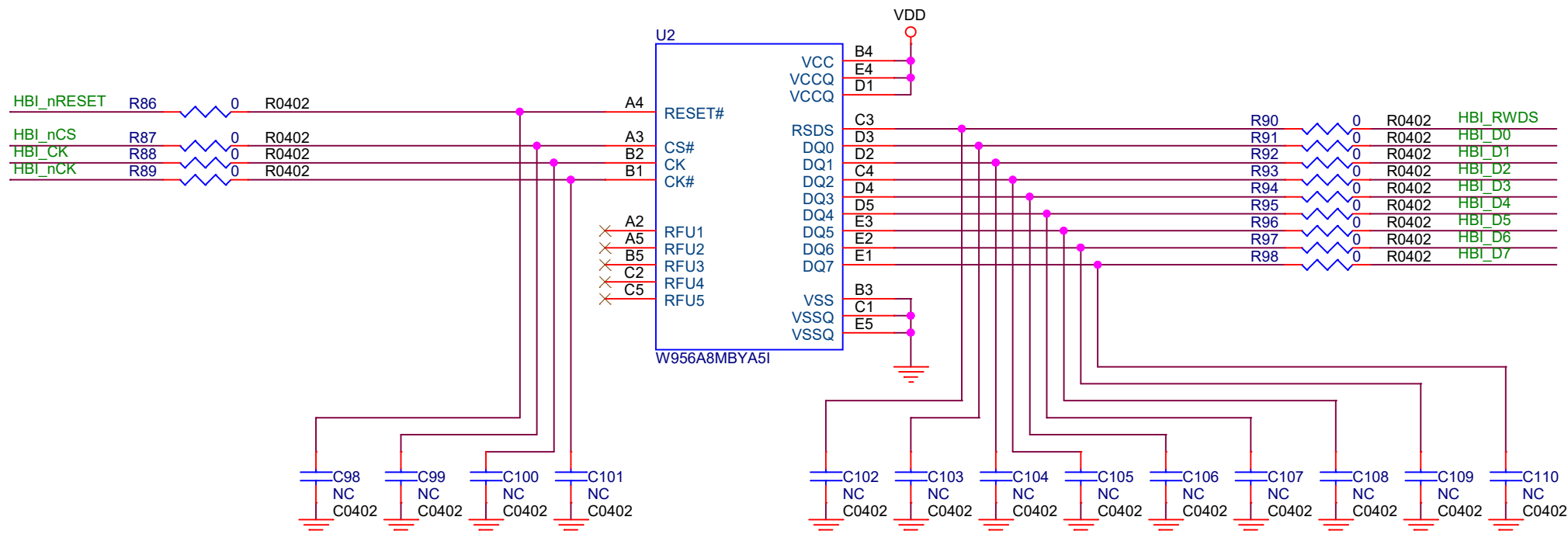
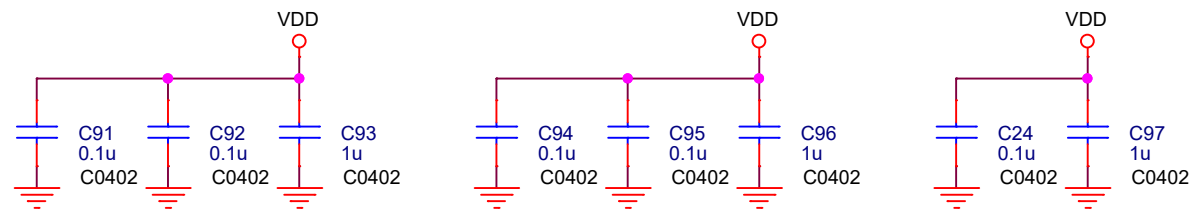
Power Source

Rev
r1.0

Date: Tuesday, March 15, 2022

Sheet 3 of 17





PIN104	PJ2	HBI_nRESET
PIN105	PJ3	HBI_D3
PIN106	PJ4	HBI_D2
PIN107	PJ5	HBI_D1
PIN108	PJ6	HBI_D0
PIN109	PJ7	HBI_nCS
PIN110	PH12	HBI_nCK
PIN111	PH13	HBI_nCK
PIN112	PH14	HBI_RWDS
PIN113	PH15	HBI_D4
PIN114	PD7	HBI_D5
PIN115	PD6	HBI_D6
PIN116	PD5	HBI_D7

*off-Page
Singals*

nuvoTon

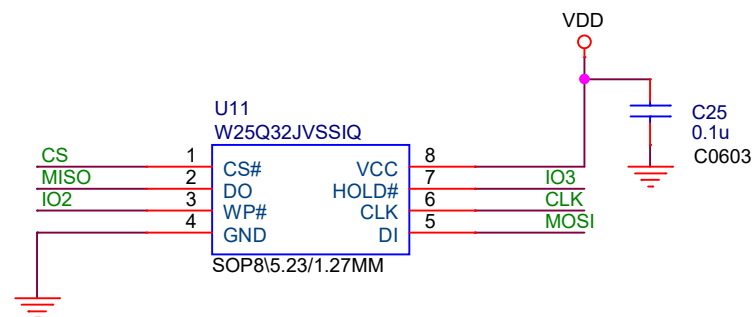
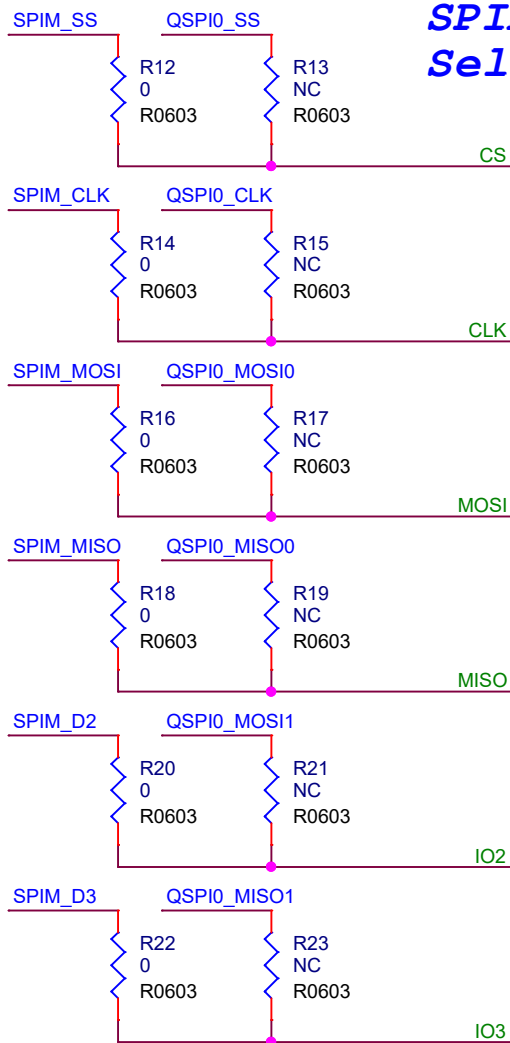
Title		
NuMaker-M460		
Size	Document Number	Rev
A	HyperRAM	r1.0
Date:	Tuesday, March 15, 2022	Sheet 5 of 17

PIN66	PI12	SPIM_SS	QSPI0_MISO1	}} FLASH_nCS FLASH_MISO FLASH_IO2 FLASH_IO3 FLASH_CLK FLASH_MOSI
PIN67	PI13	SPIM_MISO	QSPI0_MOSI1	
PIN68	PI14	SPIM_D2	QSPI0_SS	
PIN69	PI15	SPIM_D3	QSPI0_CLK	
PIN70	PJ0	SPIM_CLK	QSPI0_MISO0	
PIN71	PJ1	SPIM_MOSI	QSPI0_MOSI0	

*off-Page
Singals*

SPIM / QSPI Selection

These resistors are used to determine the SPI Flash is controlled by which i/f. By default, it's controlled by SPIM.



nuvoTon

Title

NuMaker-M460

Size
A

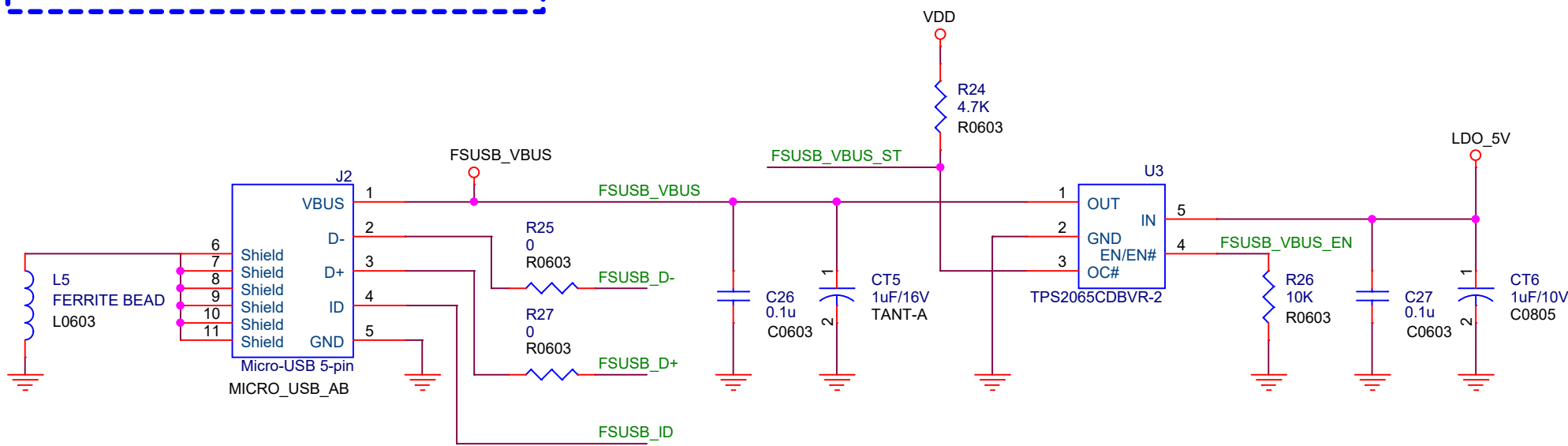
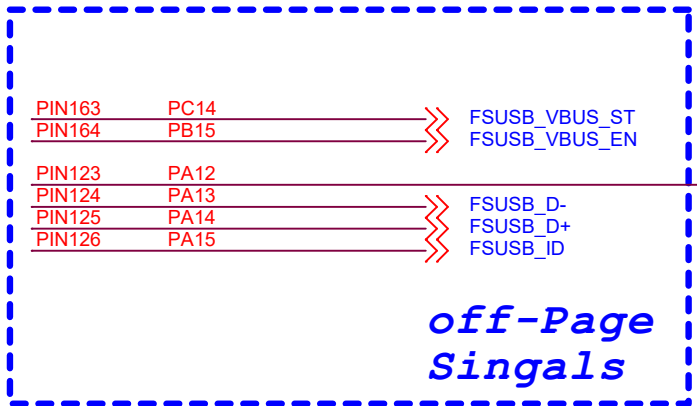
Document Number

SPI Flash

Rev
r1.0

Date: Tuesday, March 15, 2022

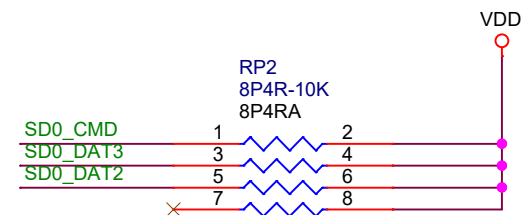
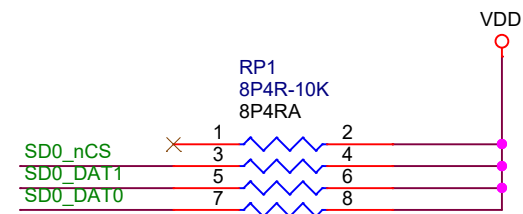
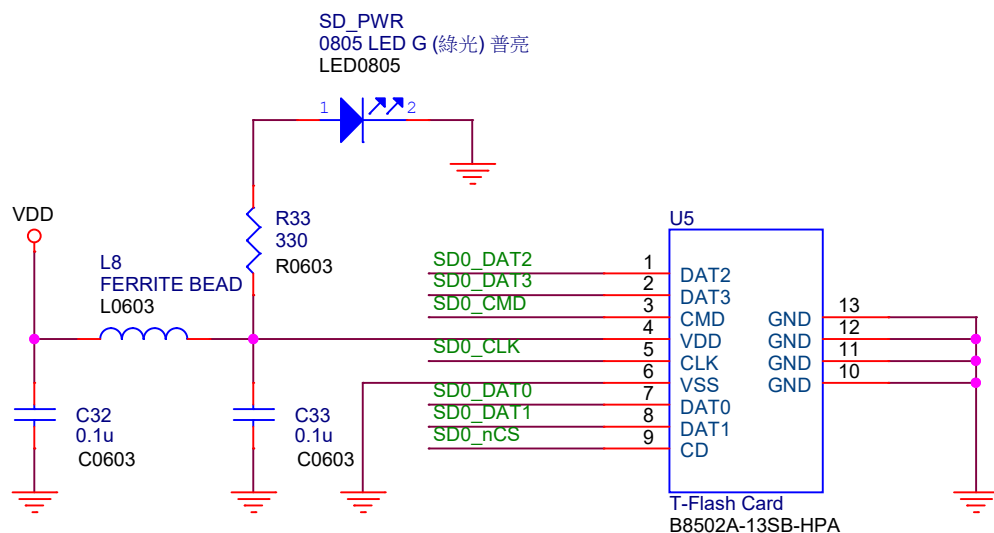
Sheet 6 of 17



Title		
NuMaker-M460		
Size A	Document Number	Rev
	FS-USB	r1.0
Date:	Tuesday, March 15, 2022	Sheet 7 of 17

PIN122	PD13	SD0_nCS	SDHC_nCS
PIN135	PE7	SD0_CMD	SDHC_CMD
PIN136	PE6	SD0_CLK	SDHC_CLK
PIN137	PE5	SD0_DAT3	SDHC_DAT3
PIN138	PE4	SD0_DAT2	SDHC_DAT2
PIN139	PE3	SD0_DAT1	SDHC_DAT1
PIN140	PE2	SD0_DAT0	SDHC_DAT0

*off-Page
Singals*



nuvoTon

Title

NuMaker-M460

Size
A

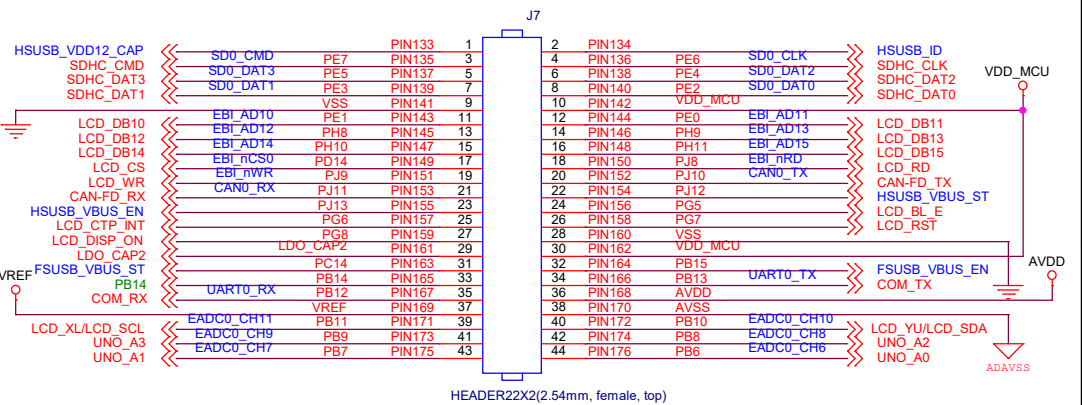
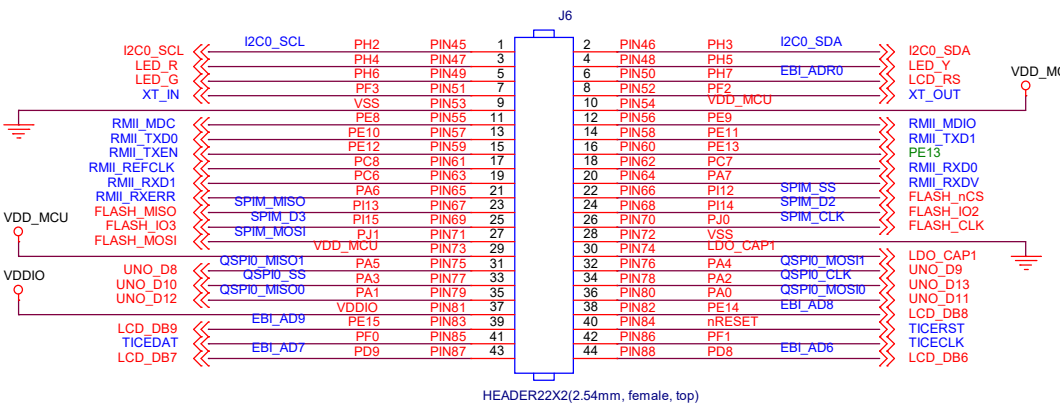
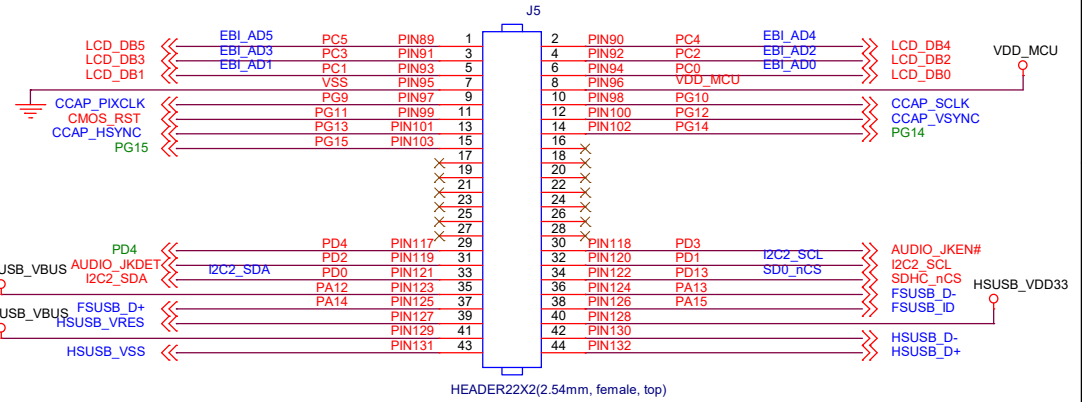
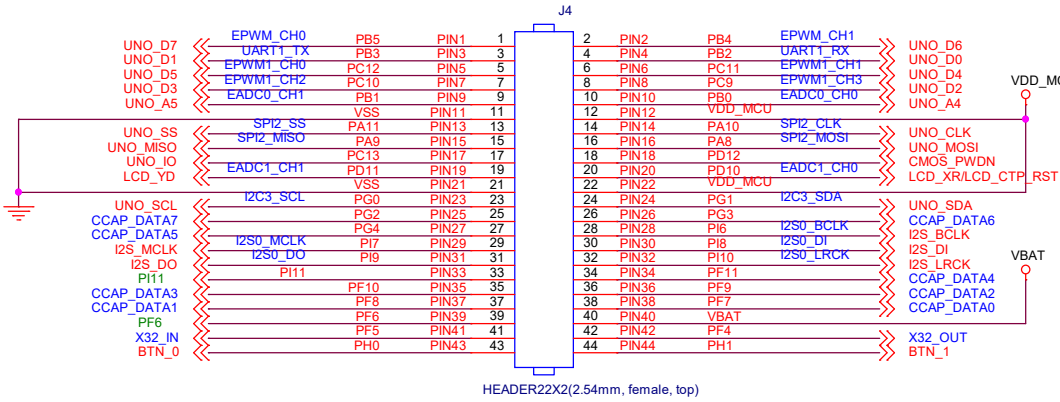
Document Number

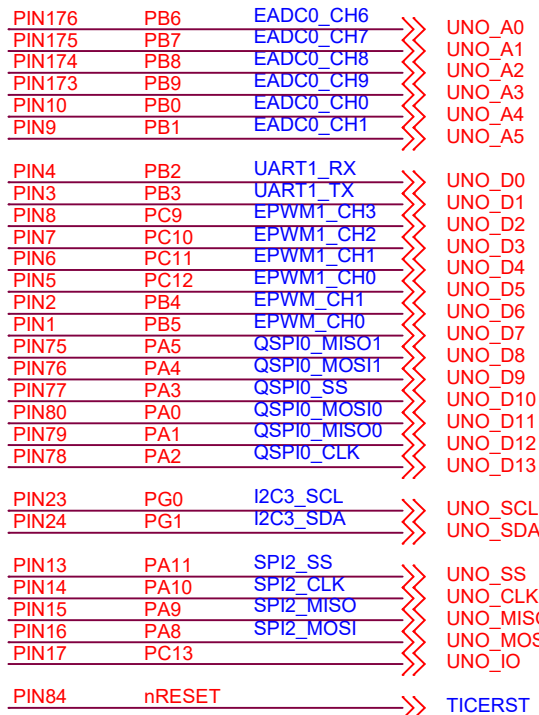
SD Card

Rev
1.0

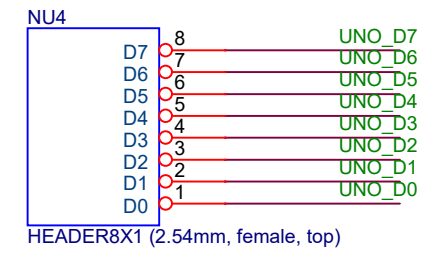
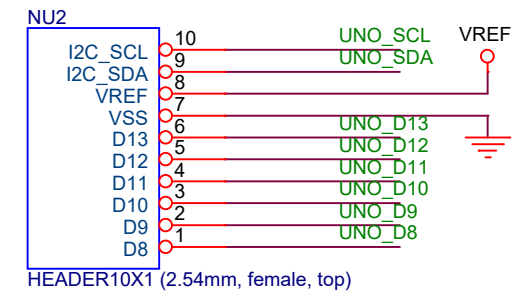
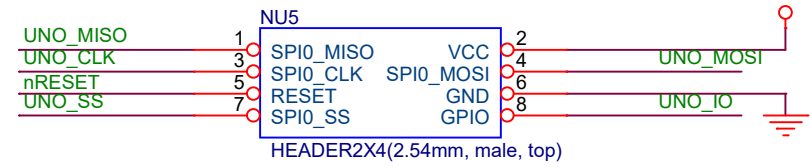
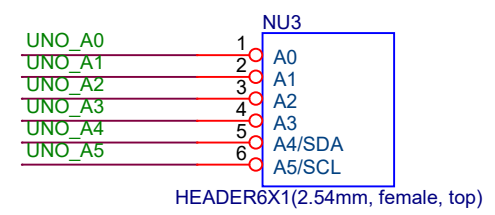
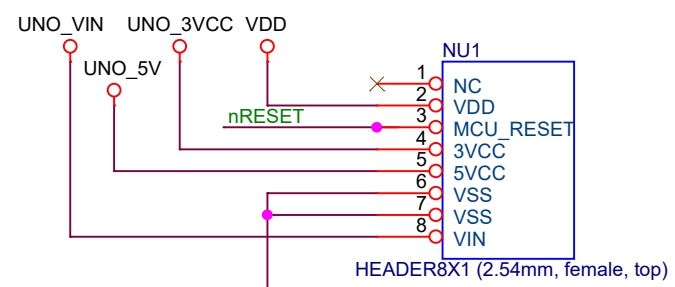
Date: Tuesday, March 15, 2022

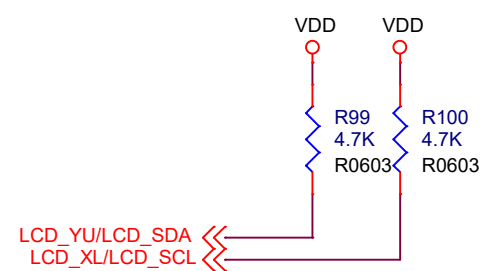
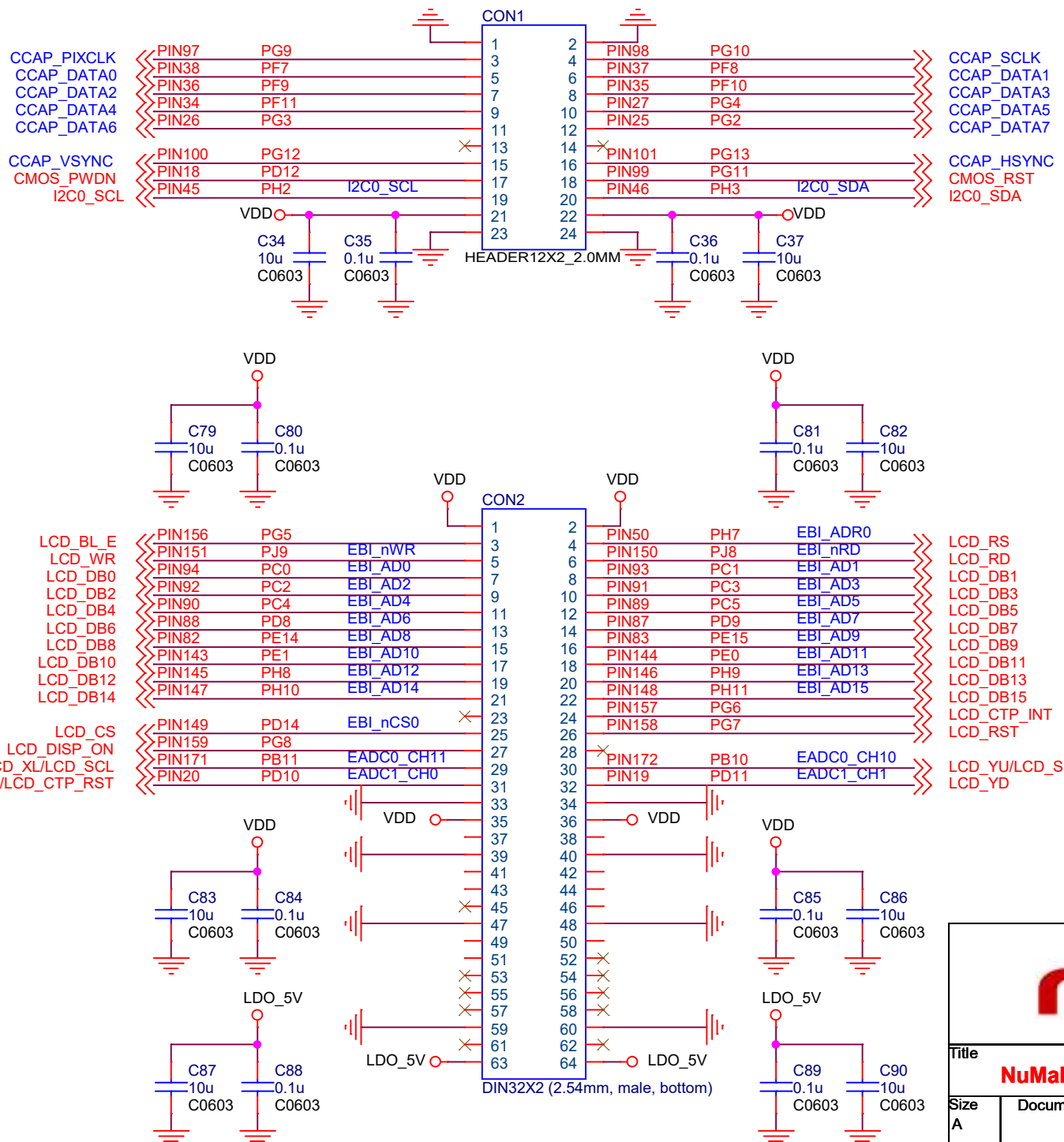
Sheet 9 of 17



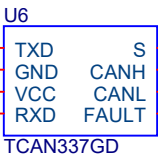
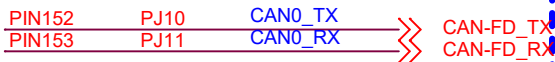


*off-Page
Singals*





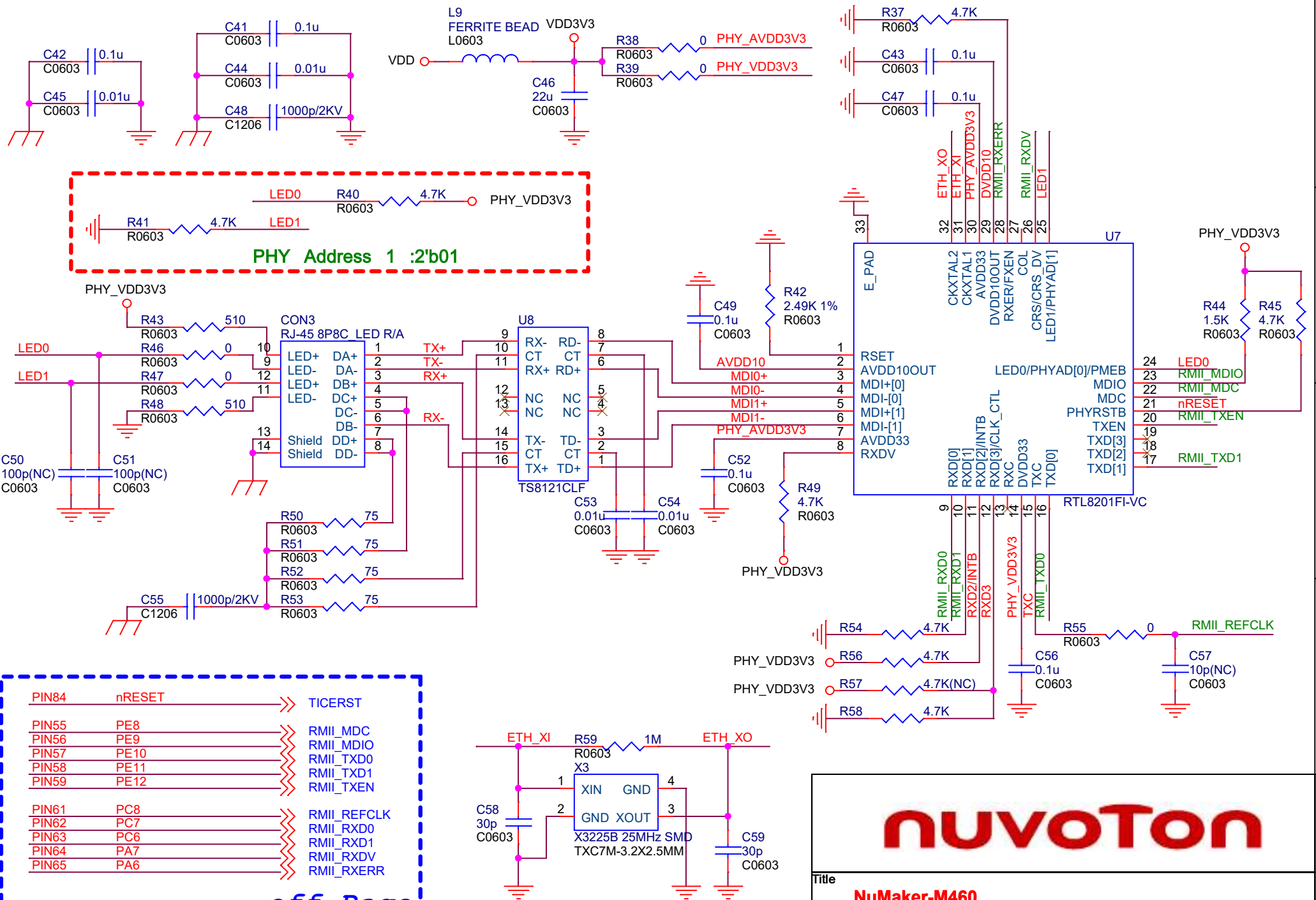
Title		
NuMaker-M460		
Size A	Document Number	Rev
	CMOS & LCD I/F	r1.0
Date:	Tuesday, March 15, 2022	Sheet 12 of 17

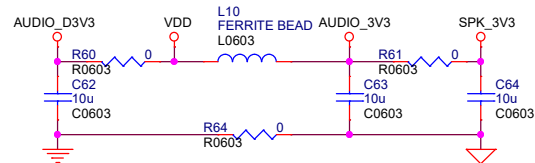


NuMaker-M460

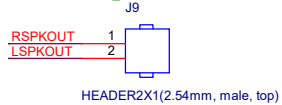
Rev	
r1.0	

Date:	Tuesday, March 15, 2022	Sheet	13	of	17
-------	-------------------------	-------	----	----	----

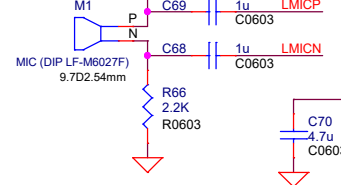




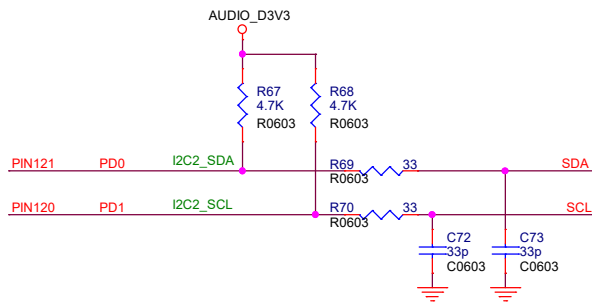
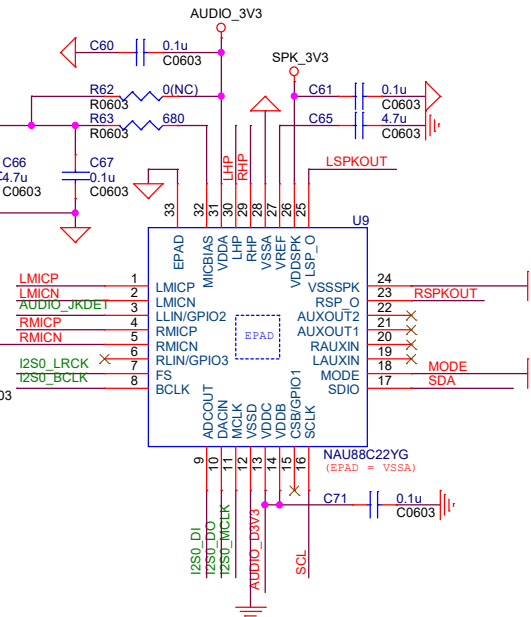
Speaker



Microphone

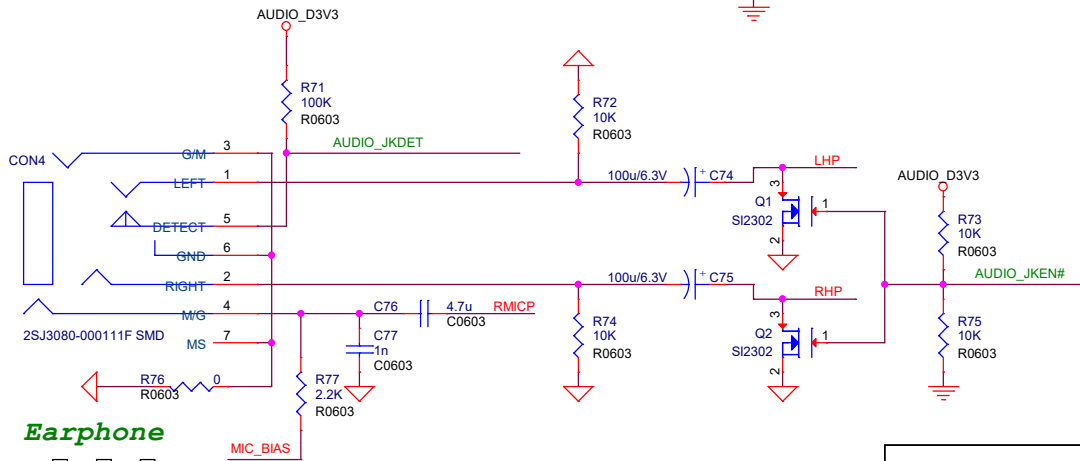


Codec

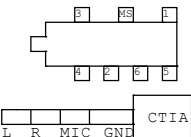


PIN28	PI6	I2S0_BCLK	I2S_BCLK
PIN29	PI7	I2S0_MCLK	I2S_MCLK
PIN30	PI8	I2S0_DI	I2S_DI
PIN31	PI9	I2S0_DO	I2S_DO
PIN32	PI10	I2S0_LRCK	I2S_LRCK
PIN121	PD0	I2C2_SDA	I2C2_SDA
PIN120	PD1	I2C2_SCL	I2C2_SCL
PIN119	PD2	AUDIO_JKDET	AUDIO_JKDET
PIN118	PD3	AUDIO_JKEN#	AUDIO_JKEN#

off-Page
Singals



Earphone



nuvoTon

Title	NuMaker-M460		
Size	Document Number	Rev	
B	Audio	r1.0	
Date:	Tuesday, March 15, 2022	Sheet	15 of 17

PIN121 PD0 I2C2_SDA
 PIN120 PD1 I2C2_SCL
 The thermal sensor (NCT7717U) and
 audio codec (NAU88C22) are shared
 with the same I2C bus (I2C2)

*off-Page
Singals*

